

JULY 2025

MCCREARY COUNTY EXTENSION

AGRICULTURE & NATURAL RESOURCES NEWSLETTER

Butterfly Gardens Play a Critical Role in Plant Pollination

Butterflies aren't the only ones that can benefit from butterfly gardens. Honeybees, which are native to Europe and introduced to the United States, are also important pollinators for home gardens. Numerous other pollinator species including native bees, butterflies and moths, beetles, birds and bats benefit our gardens. Sadly, many of the pollinators have suffered from habitat loss, chemical misuse, diseases and parasites.

Butterfly gardeners play a critical role in nurturing and conserving both native and introduced pollinators. Butterfly gardens and landscapes provide pollinators with food, water, shelter and habitat to complete their life cycles. Just like with any new flower bed, you want to pick a site for your butterfly garden with good drainage, full sun, and an area with good weed control. If you are starting a new butterfly garden, get a soil test, eliminate the weeds and add organic matter.

Butterflies, honeybees and other pollinators need protein from flower pollen and carbohydrates from flower nectar. Plan to provide a variety of different types of flowers

KENTUCKY STATE FAIR

AUGUST 14 - 24  KY EXPO CENTER

DISCOUNT STATE FAIR TICKETS

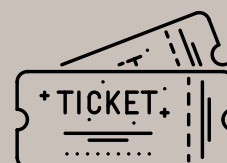
FOR 4-H & FFA
YOUTH & FAMILIES

\$4 EACH

**Does not include rides.*

**PLEASE CALL 606-376-2524
TO ORDER.**

**PAYMENT DUE JULY 18TH
MCCREARY COUNTY EXTENSION**





and aim to have three different flower species in bloom throughout the growing season. Showy, colorful flowers and massed groups of flowers, particularly in small gardens, provide efficient feeding stations for the pollinators. Flowering trees and shrubs also provide excellent food sources. Native plants share a long history with their pollinators- including a wide variety of natives will make your garden a favorite destination for pollinators. You want to have a variety of plants, preferably native and non-native ones that will bloom throughout the growing season. Some of these are purple cone flower, black-eyed susan, asters, golden rod, yarrow, tall blazing star, milkweed, coreopsis and many more. The Kentucky Native Plant Society has an updated listing of nurseries in Kentucky that sell native plants.

For more information on planting a pollinator garden, contact the McCreary County Extension Service.



Tracie Goodman
ANR/4-H Extension Agent
University of Kentucky
McCreary County Cooperative Extension Service
141 College St.- P.O. Box 278
Whitley City, KY 42653
606-376-2524
Tracie.Goodman@uky.edu

UPCOMING EVENTS MCCREARY CO. EXTENSION

McCreary County Farmers Market
Saturdays, 9am-1pm

Drip Irrigation for the Home
Garden- Hands On
July 8th, 5:30pm

Beginner Sewing Workshop
Saturday July 12th, 10am-2pm
MUST pre-register!

McCreary Homemakers
Council Meeting
July 17th, 6pm

Big South Fork Beekeepers
Association Meeting
July 21st, 7pm

Scott/McCreary Grow Appalachia
July 24th, 5:30pm
Scott Christian Care Center
Oneida, TN

*Our office is closed July 4th in
observance of Independence Day.*

*Agent will be out of the office
July 20th-25th for
4-H Forestry Nationals.*

Call 606-376-2524 or email
mccreary.ext@uky.edu for
assistance.

Follow us!



SCAN ME



July Garden Tips



Check out planeatmove.com for garden info & seasonal recipes!

In July, many crops are beginning to mature. Corn is harvested over a shorter period of time than some other crops as all of the ears ripen at about the same time. This allows the crop to be removed after the harvest and another crop planted in its place.

Even though temperatures are warm, now is the time to think about planting for fall harvest.

Carrots, beets, cabbage plants and parsnips planted in July will mature in early fall.

July is also a good time for a second crop of beans or even corn if it matures quickly (75 days or less, check the seed package for maturity information often listed as "days to maturity").

Continue watering if rainfall is scarce! Water at the base of the plant.



CATTLEMEN'S CORNER

SUMMER TIPS

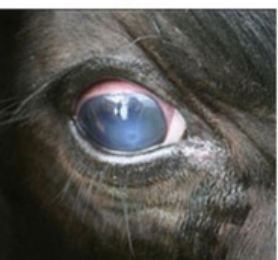
Control face flies to prevent pink eye: back rubbers with wicks/fly flips, dust bags or self-applicator sprayers near mineral feeders, insecticide-impregnated ear tags. Keep pastures clipped down.

Check pastures for downed wild cherry trees after storms (wilted wild cherry leaves are toxic to cattle).

Continue to provide minerals and clean drinking water.

Consider creep-feeding Spring calves to maximize daily gains.

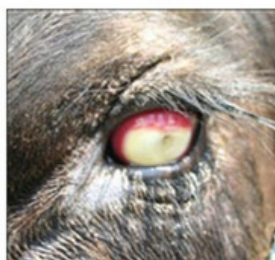
Stage 1



Stage 2



Stage 3



Photos from MSU Extension





ANR Spotlight



PULASKI COUNTY TORNADO RELIEF

The McCreary Cattlemen's Association delivered a trailer and 2 truck loads of supplies to Pulaski County for farmers impacted by the recent tornadoes.

Special thanks to McCreary Conservation District, McCreary Farm Bureau, Prewitt's Farm Supply, Burkmann Nutrition, Pine Knot Grocery, and all donating members.

Alone we can do so little.
Together we can do so much.

McCreary County Extension Office
PO Box 278
Whitley City, KY 42653
606-376-2524